

Riverbanks Zoo and Garden

Gift Shop, Guest Services and Grizzly/Otter Exhibit



RIVERBANKS ZOO AND GARDEN

ENTRY PLAZA AND EXHIBITS:
GIFT SHOP, GUEST SERVICES, AND GRIZZLY & OTTER EXHIBIT

Restroom Building Preparations Continue for Trespa and Tile



View of the Guest Services Building from the North



View of the Guest Services Building from the East



Drywall Installation Continues at the Guest Services Building



View of the Guest Services Building from the East



View of Otter Holding from the East



Entrance to the Otter Viewing Shelter from the East



Hardscape from Otter Holding to the Viewing Shelter



Work Progresses for the Otter LSS Equipment Installation



Hardi Siding Roof Trim and Exhaust Fan at the Restroom Building



Mechanical Unit Installation Complete for Guest Services



Exhibit Entrance Gates and Retaining Wall Starting to Take Shape



Otter Exhibit Work Continues with Excavation of the Pools



View Shelter Rockwork Tied Into Existing at West Side of Grizzly



Rockwork Projecting Into the View Shelter at Grizzly Bear



RFI-116 Work Completed at the Grizzly Viewing Shelter Glass



View of Gift Shop Building from the Southwest



View of the Gift Shop from the North



Work Progresses Within the Gift Shop



Drywall Installation Begins at the Gift Shop



View of the LSS Building from the Northeast



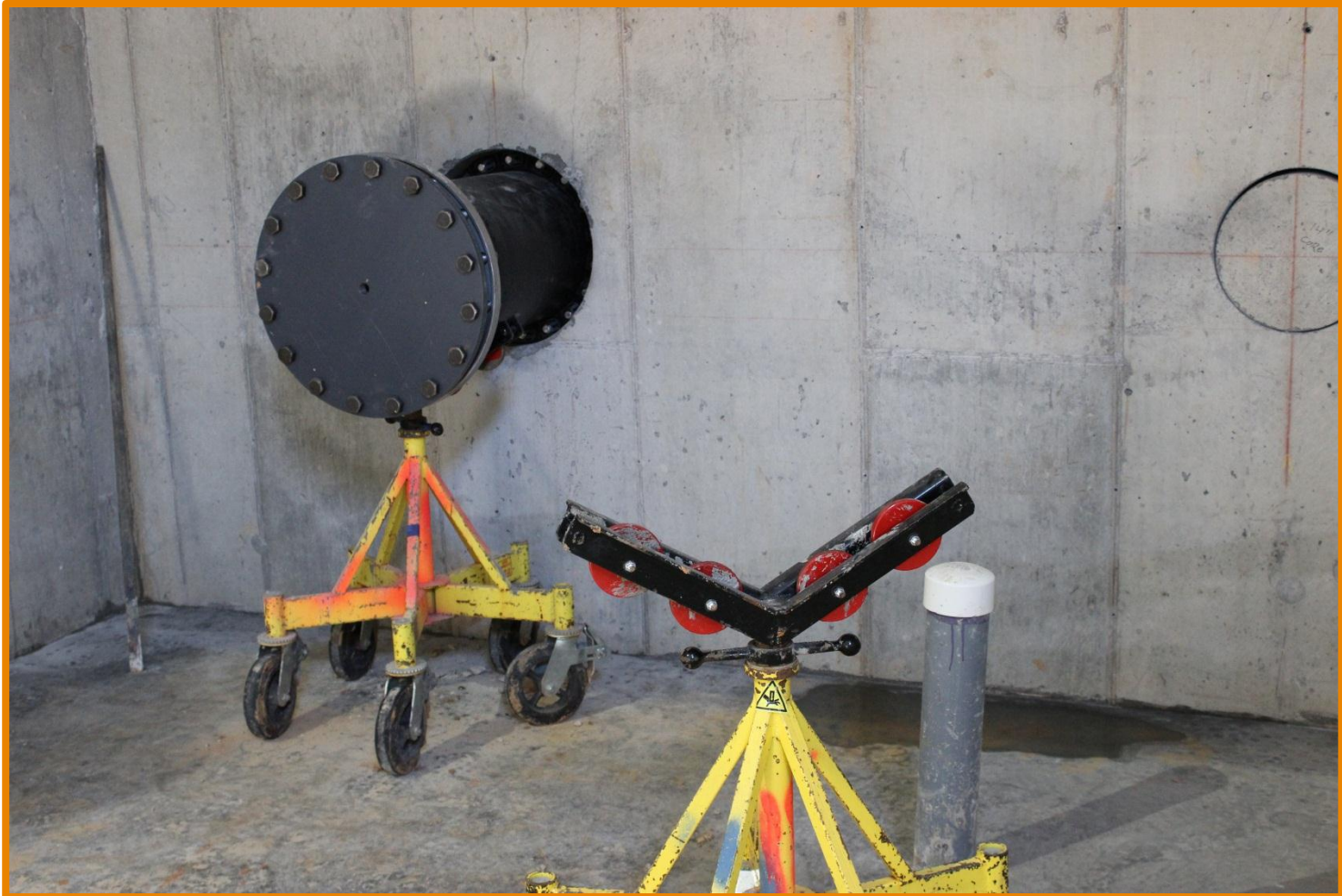
Roll Up Door Installation at the LSS Building



Lower Slab Placed at LSS Building



View from the Inside of LSS Piping Into LSS Building



LSS Piping Installation from the LSS Building



Rebar, Formwork and Concrete Placement for Phase II, Progresses



Formwork Begins at Viewing Building for Seals and Sea Lions



Phase II, Holding Pool Concrete Placement



One Week Look Ahead

➔ Exhibit plumbing fixtures to be installed at Otter with LSS piping Rough In for Grizzly next week. Drywall to be sanded, finished and prime painted so that ceiling grid installation may begin at the Guest Services Building. Drywall to continue at the Gift Shop Building. HVAC Units to be started at both the Guest Services and Gift Shop Buildings. Phase II, work to continue with installation of the foundation drainage and waterproofing to coincide with the first backfill lifts to 160.00'.



YOUR NEW GRIZZLY AND OTTER EXHIBITS COMING SOON

